



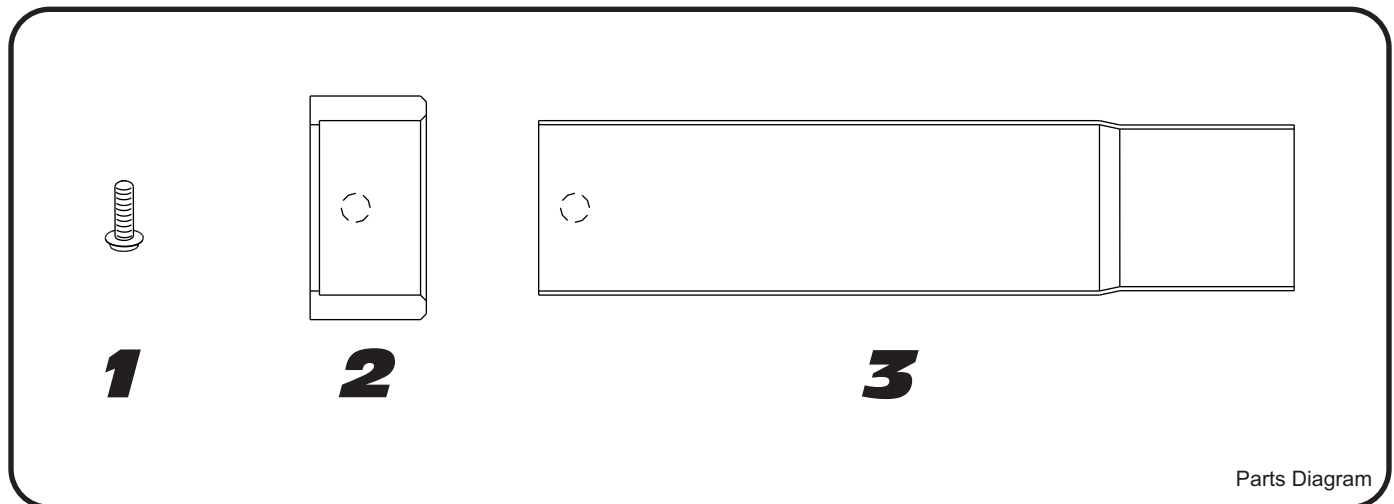
YOSHIMURA

RESEARCH & DEVELOPMENT OF AMERICA, INC.

5420 DANIELS STREET SUITE A, CHINO, CA 91710 · (800) 634-9166 · (909) 628-4722 · FAX (909) 591-2198

www.yoshimura-rd.com

INS-20-K | YOSHIMURA ALPHA SOUND INSERT



NO.	DESCRIPTION	QTY	PART #
1	6mm x 12mm Button Head Screw	1	M6X12BHS
2	Low Volume Insert Ring 1.5"	1	YM5-RING-1500
3	R77 Low Volume Insert	1	R77-INS
**	6mm Tooth Lock Washer	1	6MMLCKWSHR-TH

Caution: Muffler can be extremely hot. Let muffler cool down before installing sound inserts.

Note: Read through all instructions before beginning disassembly.

Tools Needed:

4mm Allen Key

Installation Steps:

1. Place aluminum ring over insert. Make sure to align the hole on the insert with the hole on the ring.
2. Punch out insert hole tab on inner endcap assembly.
3. Place insert inside the outlet of Yoshimura muffler.
4. Secure insert using supplied button head screw and 6mm lock washer from outside. Torque to 8 lb-ft.
Note: It is recommended that a low strength "Loc-tite" is used on the button head screw.
5. Scan QR code for insert removal/installation instructions.

