



YOSHIMURA

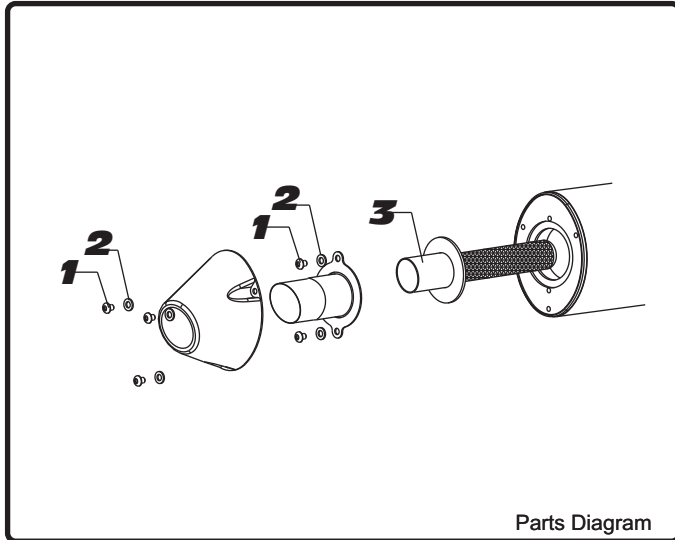
RESEARCH&DEVELOPMENT OF AMERICA, INC.

5420 DANIELS STREET SUITE A, CHINO, CA 91710 · (800)634-9166 · (909)628-4722 · FACSIMILE (909)591-2198

www.yoshimura-rd.com

SA-11-K

YOSHIMURA TEC-SD5 SPARK ARRESTOR KIT



Parts Diagram

NO.	DESCRIPTION	QTY	PART #
1	5mm X 12mm Button Head Cap Screw	5	M5X12
2	5mm Lock Washer	5	5MM-LCKWSH
3	TEC-SD5 Spark Arrester	1	TEC-SD5

- Using a 4mm Allen key, end cap by removing 3 screws holding end cap to end cap base (see Parts Diagram for location).
 - Remove 2 screws holding the spark arrester to end cap base and remove spark arrester..
 - Using a wire brush, remove carbon deposits from spark arrester screen. Inspect the screen for excessive wear or damage. If spark arrester is excessively worn or damaged, the spark arrester must be replaced. Cleaning and inspection should be performed after every 60 hours of use.
- CAUTION:** Gloves and safety glasses should be worn while cleaning spark arrester.
- Re-install spark arrester and cap. Torque the spark arrester securing screws to 1.0 kg-m (7.3 lb-ft).

NOTE: It is recommended that a low strength thread lock is used on the spark arrester and end cap securing screws.



YOSHIMURA

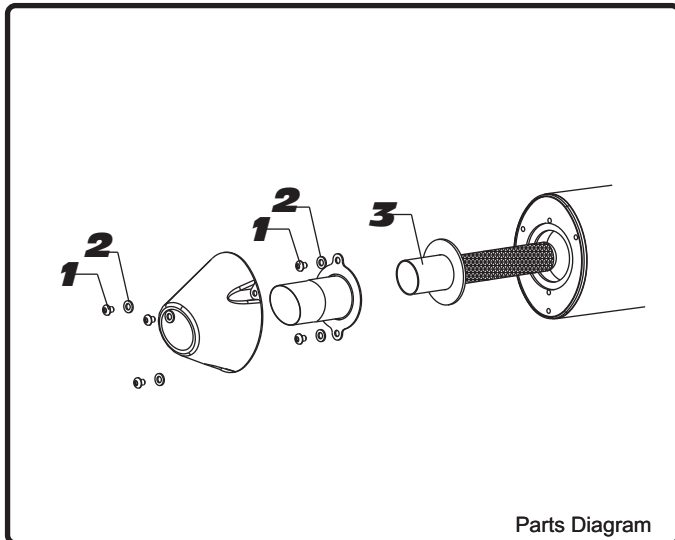
RESEARCH&DEVELOPMENT OF AMERICA, INC.

5420 DANIELS STREET SUITE A, CHINO, CA 91710 · (800)634-9166 · (909)628-4722 · FACSIMILE (909)591-2198

www.yoshimura-rd.com

SA-11-K

YOSHIMURA TEC-SD5 SPARK ARRESTOR KIT



Parts Diagram

NO.	DESCRIPTION	QTY	PART #
1	5mm X 12mm Button Head Cap Screw	5	M5X12
2	5mm Lock Washer	5	5MM-LCKWSH
3	TEC-SD5 Spark Arrester	1	TEC-SD5

- Using a 4mm Allen key, end cap by removing 3 screws holding end cap to end cap base (see Parts Diagram for location).
 - Remove 2 screws holding the spark arrester to end cap base and remove spark arrester..
 - Using a wire brush, remove carbon deposits from spark arrester screen. Inspect the screen for excessive wear or damage. If spark arrester is excessively worn or damaged, the spark arrester must be replaced. Cleaning and inspection should be performed after every 60 hours of use.
- CAUTION:** Gloves and safety glasses should be worn while cleaning spark arrester.
- Re-install spark arrester and cap. Torque the spark arrester securing screws to 1.0 kg-m (7.3 lb-ft).

NOTE: It is recommended that a low strength thread lock is used on the spark arrester and end cap securing screws.