



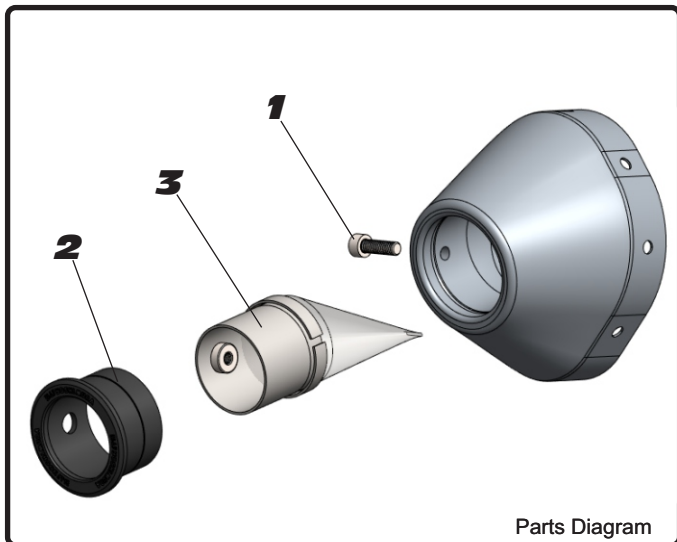
YOSHIMURA

RESEARCH&DEVELOPMENT OF AMERICA, INC.

5420 DANIELS STREET SUITE A, CHINO, CA 91710 · (800) 634-9166 · (909) 628-4722 · FAX (909) 591-2198

www.yoshimura-rd.com

SA-23-K | YOSHIMURA TEC-MDS4 SPARK ARRESTOR KIT



Parts Diagram

NO.	DESCRIPTION	QTY	PART #
1	5mm X 16mm Socket Head Cap Screw	1	M5X16
2	MDS4 Insert Ring, 1.550"	1	MDS4-RING-1550
3	TEC-MDS4 Spark Arrestor	1	TEC-MDS4

- 1 Remove the screw that secures the aluminum ring and spark arrestor to the muffler (see Parts Diagram for location).
- 2 Remove the spark arrestor from the muffler.
- 3 Using a wire brush, remove carbon deposits from spark arrestor screen. Inspect the screen for excessive wear or damage. If spark arrestor is excessively worn or damaged, the spark arrestor must be replaced. Cleaning and inspection should be performed after every 60 hours of use.

CAUTION: Gloves and safety glasses should be worn while cleaning spark arrestor.

- 4 Re-install spark arrestor and aluminum ring. Torque the spark arrestor securing screw to 1.0 kg-m (7.3 lb-ft).

NOTE: It is recommended that a low strength thread lock is used on the spark arrestor securing screw.



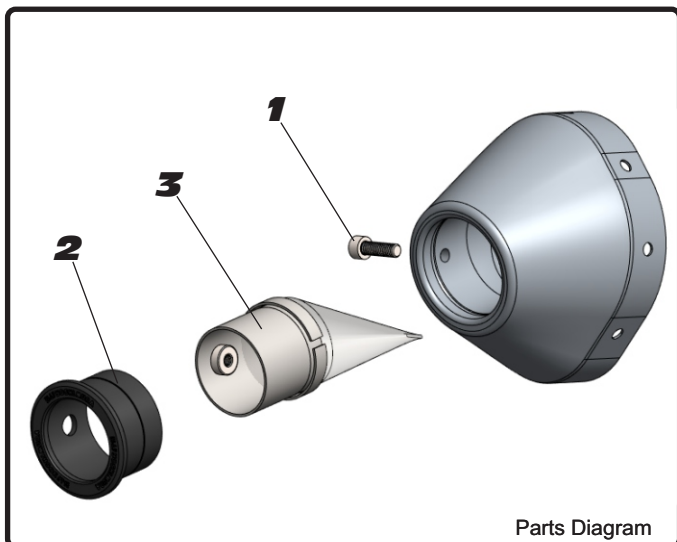
YOSHIMURA

RESEARCH&DEVELOPMENT OF AMERICA, INC.

5420 DANIELS STREET SUITE A, CHINO, CA 91710 · (800) 634-9166 · (909) 628-4722 · FAX (909) 591-2198

www.yoshimura-rd.com

SA-23-K | YOSHIMURA TEC-MDS4 SPARK ARRESTOR KIT



Parts Diagram

NO.	DESCRIPTION	QTY	PART #
1	5mm X 16mm Socket Head Cap Screw	1	M5X16
2	MDS4 Insert Ring, 1.550"	1	MDS4-RING-1550
3	TEC-MDS4 Spark Arrestor	1	TEC-MDS4

- 1 Remove the screw that secures the aluminum ring and spark arrestor to the muffler (see Parts Diagram for location).
- 2 Remove the spark arrestor from the muffler.
- 3 Using a wire brush, remove carbon deposits from spark arrestor screen. Inspect the screen for excessive wear or damage. If spark arrestor is excessively worn or damaged, the spark arrestor must be replaced. Cleaning and inspection should be performed after every 60 hours of use.

CAUTION: Gloves and safety glasses should be worn while cleaning spark arrestor.

- 4 Re-install spark arrestor and aluminum ring. Torque the spark arrestor securing screw to 1.0 kg-m (7.3 lb-ft).

NOTE: It is recommended that a low strength thread lock is used on the spark arrestor securing screw.