

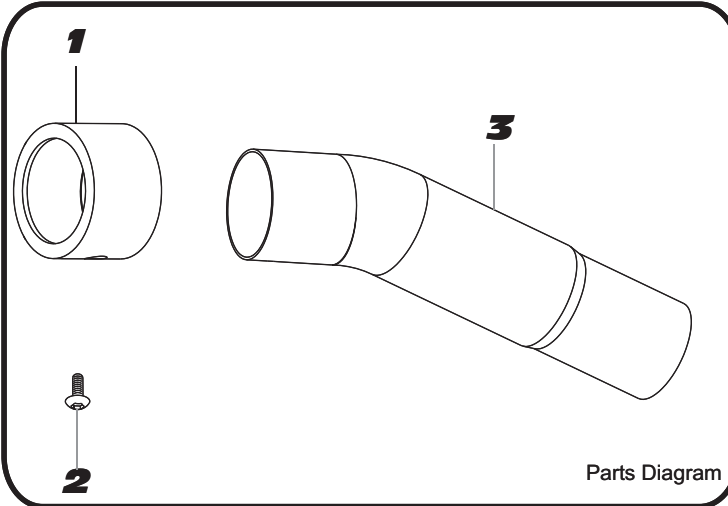


YOSHIMURA

RESEARCH&DEVELOPMENT OF AMERICA, INC.

5420 DANIELS STREET SUITE A, CHINO, CA 91710 · (800)634-9166 · (909)628-4722 · FACSIMILE (909)591-2198
www.yoshimura-rd.com

TRS-INS-BK | YOSHIMURA TRS INSERT KIT



NO.	DESCRIPTION	QTY	PART #
1	TRS Insert Ring	1	TRS-RING-1500
2	6mm X 12mm Button Head Cap Screw	1	M6X12BHS
3	TRS Low Volume Insert	1	TRS-INS-B

Tools Needed:

4mm Allen Key

Installation Steps:

1. Place insert inside the outlet of Yoshimura muffler.
2. Secure insert using supplied button head cap screw.
Torque to 8 lb-ft.

NOTE: It is recommended that a low strength "Loc-tite" is used on the button head cap screw.

Caution: Muffler can be extremely hot. Let muffler cool down before installing sound inserts.
Note: Read through all instructions before beginning disassembly.

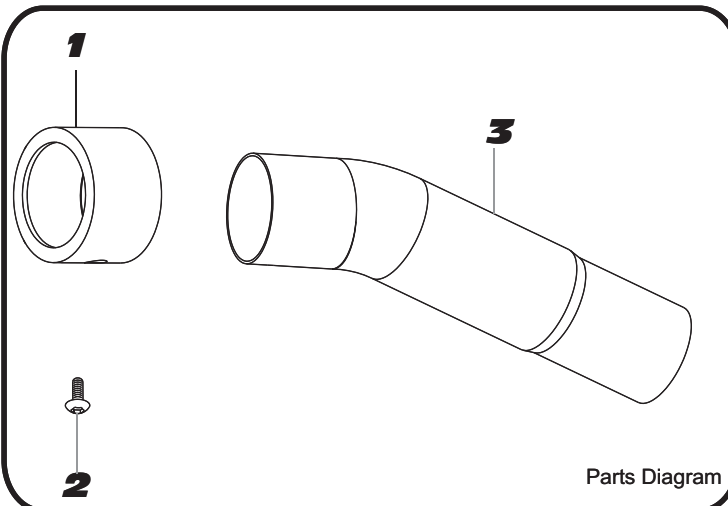


YOSHIMURA

RESEARCH&DEVELOPMENT OF AMERICA, INC.

5420 DANIELS STREET SUITE A, CHINO, CA 91710 · (800)634-9166 · (909)628-4722 · FACSIMILE (909)591-2198
www.yoshimura-rd.com

TRS-INS-BK | YOSHIMURA TRS INSERT KIT



NO.	DESCRIPTION	QTY	PART #
1	TRS Insert Ring	1	TRS-RING-1500
2	6mm X 12mm Button Head Cap Screw	1	M6X12BHS
3	TRS Low Volume Insert	1	TRS-INS-B

Tools Needed:

4mm Allen Key

Installation Steps:

1. Place insert inside the outlet of Yoshimura muffler.
2. Secure insert using supplied button head cap screw.
Torque to 8 lb-ft.

NOTE: It is recommended that a low strength "Loc-tite" is used on the button head cap screw.

Caution: Muffler can be extremely hot. Let muffler cool down before installing sound inserts.
Note: Read through all instructions before beginning disassembly.