

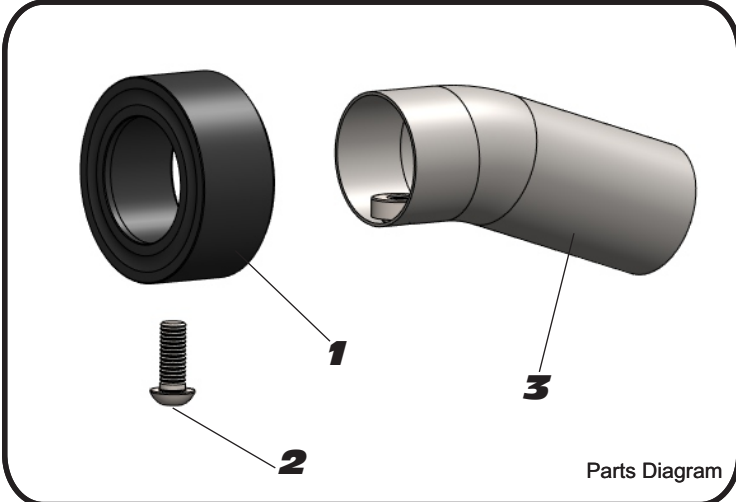


# YOSHIMURA

RESEARCH&DEVELOPMENT OF AMERICA, INC.

5420 DANIELS STREET SUITE A, CHINO, CA 91710 · (800) 634-9166 · (909) 628-4722 · FAX (909) 591-2198  
[www.yoshimura-rd.com](http://www.yoshimura-rd.com)

## TRS-INS-CK | YOSHIMURA TRS INSERT KIT



NO.	DESCRIPTION	QTY	PART #
1	TRS Insert Ring	1	TRS-RING-1250
2	6mm X 12mm Button Head Cap Screw	1	M6X16BHS
3	TRS Low Volume Insert	1	TRS-INS-C

### Tools Needed:

4mm Allen Key

### Installation Steps:

1. Place insert inside the outlet of Yoshimura muffler.
2. Secure insert using supplied button head cap screw.  
Torque to 8 lb-ft.

**NOTE:** It is recommended that a low strength "Loc-tite" is used on the button head cap screw.

**Caution:** Muffler can be extremely hot. Let muffler cool down before installing sound inserts.  
**Note:** Read through all instructions before beginning disassembly.

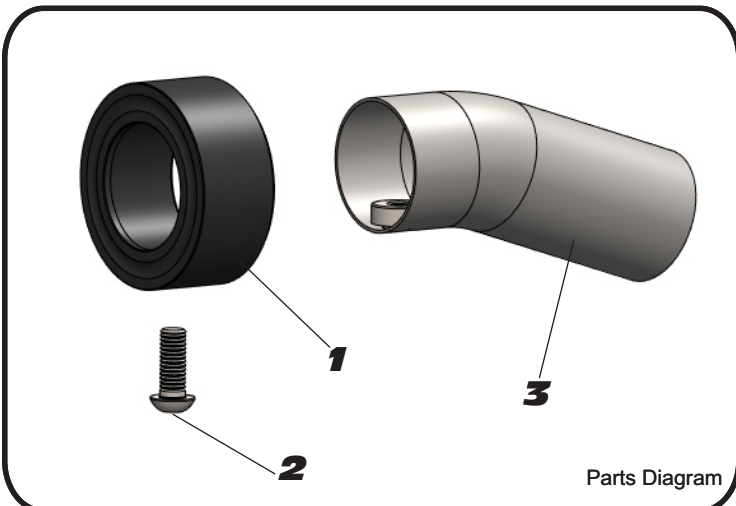


# YOSHIMURA

RESEARCH&DEVELOPMENT OF AMERICA, INC.

5420 DANIELS STREET SUITE A, CHINO, CA 91710 · (800) 634-9166 · (909) 628-4722 · FAX (909) 591-2198  
[www.yoshimura-rd.com](http://www.yoshimura-rd.com)

## TRS-INS-CK | YOSHIMURA TRS INSERT KIT



NO.	DESCRIPTION	QTY	PART #
1	TRS Insert Ring	1	TRS-RING-1250
2	6mm X 12mm Button Head Cap Screw	1	M6X16BHS
3	TRS Low Volume Insert	1	TRS-INS-C

### Tools Needed:

4mm Allen Key

### Installation Steps:

1. Place insert inside the outlet of Yoshimura muffler.
2. Secure insert using supplied button head cap screw.  
Torque to 8 lb-ft.

**NOTE:** It is recommended that a low strength "Loc-tite" is used on the button head cap screw.

**Caution:** Muffler can be extremely hot. Let muffler cool down before installing sound inserts.  
**Note:** Read through all instructions before beginning disassembly.